

## PSS Precision Power Shunt Resistors

- Resistance from 50μΩ to 1mΩ
- Power Rating to 100W
- Resistance Tolerance to ±0.1%
- TCR to ±5ppm/K



### ■ GENERAL SPECIFICATIONS (Fig.1)

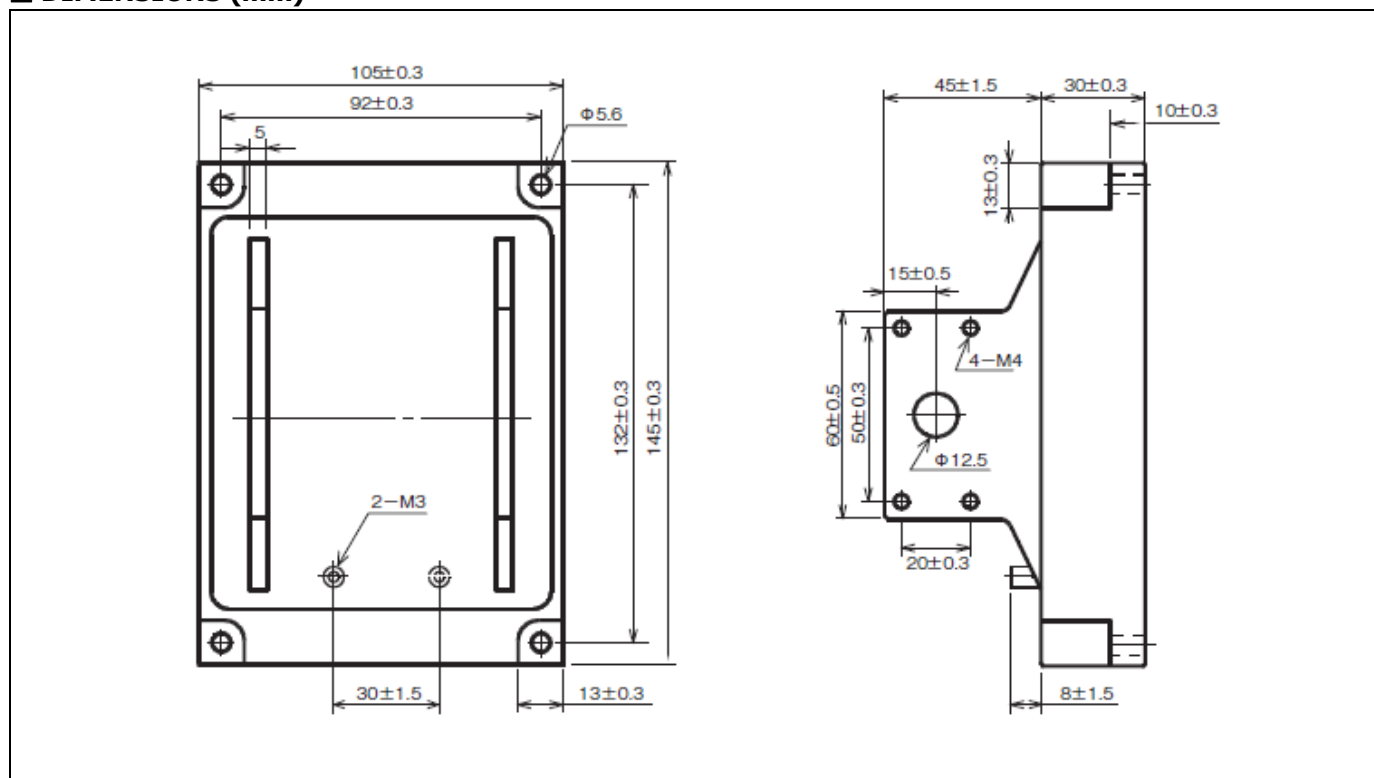
Model	Power Rating		Resistance	Tolerance	TCR (20°C~60°C)	Thermal EMF (0~100°C)	Operating Temperature
	Chassis Mounted	Free Air					
PSS	100W	40W	50uΩ, 0.1mΩ, 0.2mΩ, 0.5mΩ, 1mΩ	±0.1% ±0.5% ±1.0%	±5 ppm/°C ±10 ppm/°C	2 Uv/°C Max	-55°C~+125°C

- Max. Current: 1400A (50uΩ)
- Restriction on Temp. of Resistance Element: ±125°C
- Internal Thermal Resistance: 0.4°C/W (100uΩ)

### ■ CHARACTERISTICS

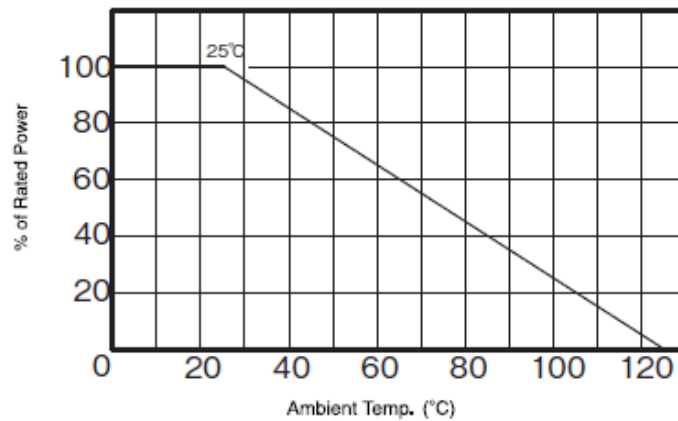
Short Time Overload	±0.05%	2 x Power rating, 5sec.
High Temperature Exposure	±0.05%	Temp. +85°C, 1000hr. (Moisture 85%)
Dielectric Strength	±0.02%	AC 1000V for 1min.
Insulation Resistance	1GΩ	DC 500V
Temp. Coefficient	Fig.1	Standard Temp. +25°C, Test Temp. +100°C
Load Life	±0.2%	Load Rating 1.5hr On, 0.5hr Off, Repeat 2000hr

### ■ DIMENSIONS (mm)

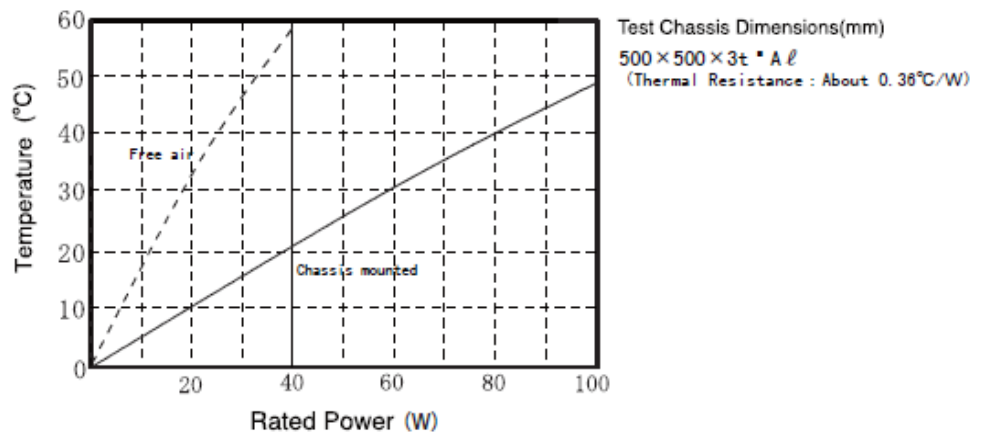




■ DERATING CURVE



■ SURFACE TEMPERATURE VERSUS POWER LOAD



■ ORDERING PROCEDURE EXAMPLE

<u>PSS</u>	<u>50 μ Ω</u>	<u>B</u>	<u>TC05</u>
Type	Resistance	Tolerance	Temp.Coefficient
	50 μ Ω   100 μ Ω   200 μ Ω   500 μ Ω   1000 μ Ω	B : ±0.1%   D : ±0.5%   F : ±1%	TC05 : ±5ppm/°C   TC10 : ±10ppm/°C