



## PR16 SINGLE-TURN ROTARY POTENTIOMETERS

### Description

The PR 16 are single-turn, metal cased, rotary carbon control potentiometers. They comprise a carbon resistive track fitted on a resin modified paper base. The base diameter of potentiometers is 16 mm. Resistance track can be linear-A, logarithmic-B, inverse logarithmic-C or type of M+N. Potentiometers are made single or tandem, either with or without tap, plastic or metallic spindle. Terminals are designed for a PCB or soldering pins. Potentiometers can be fitted on devices to hold up spindles in precise locations: 1, 11, or 41 positions.

### Applications

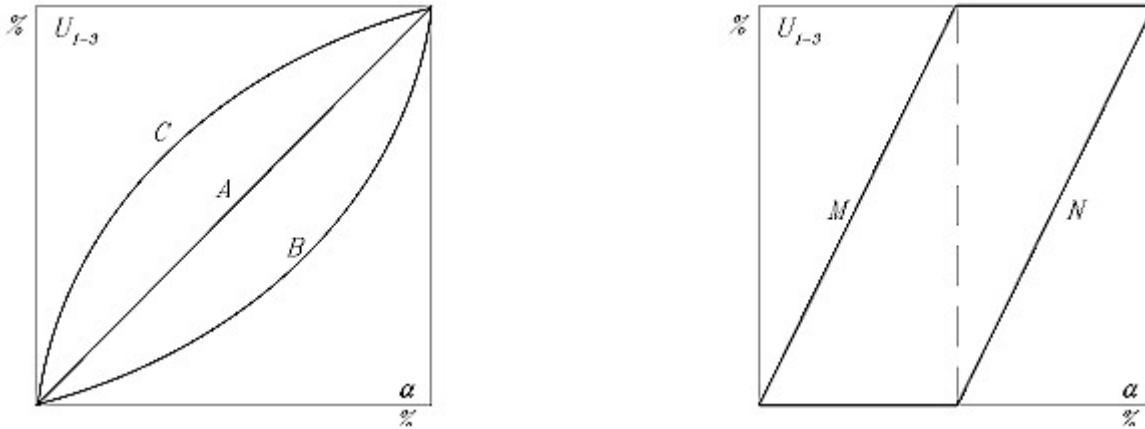
Potentiometers are widely used in electronic audio-video equipment, electric domestic equipment and outer control elements.

### Quick Reference Data

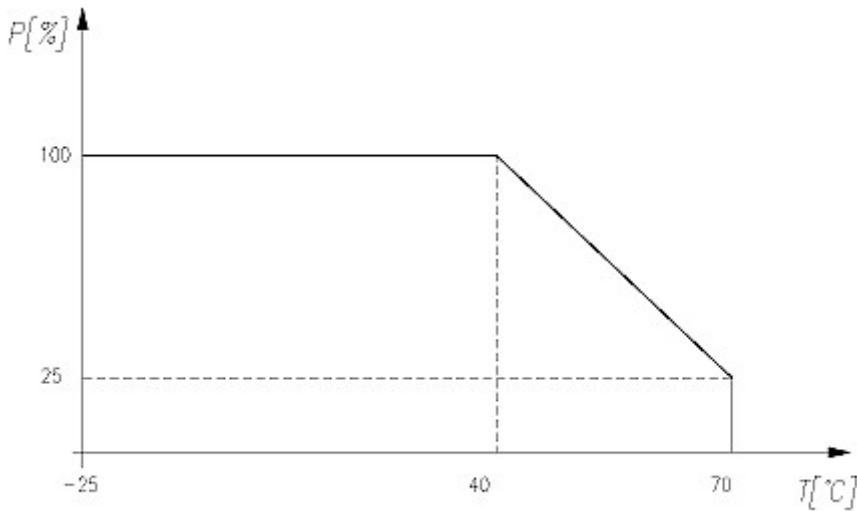
Parameter	Value
Nominal Resistance $R_N$	According E3 series (1 - 2, 2 - 4, 7 - 10 etc.)
Resistance range: A (linear law) (ohms) B (logarithmic law) (ohms) C (inverse logarithmic law) (ohms) M + N law (ohms)	100 ÷ 2,2M 1k ÷ 1M 1k ÷ 1M 1k ÷ 10k
Tolerance of resistance (%)	±5% for $R_N$ less than or equal to 470kohms on request ±10% for $R_N$ more than 470kohms on request ±20% for $R_N$ less than or equal to 220kohms ±30 % for $R_N$ more than 220kohms
Maximum dissipation at $T_{amb} = 40^{\circ}C$ : A law (W) B law (W) C law (W) M + N law (W)	0.1 0.05 0.05 0.05
Maximum working voltage: A law (V) B law (V) C law (V) M+N law (V)	160 160 160 160
Synchronous characteristics: (only for tandem potentiometers G) A law – for range 10 – 90% effective way B law – for range 0 – 40 dB	less than or equal to 2dB less than or equal to 4dB
Insulation voltage ( $V_{DC}$ )	240
Total mechanical angle of rotation ( $^{\circ}$ )	300±5
Maximum dissipation in category temperature	25% $P_N$
Climatic category	25/070/10

**Resistance Laws:**

**Fig. 1. Resistance laws: A - linear; B-logarithmic, C-reverse logarithmic.**



**Fig. 2. Derating curve versus ambient temperature.**



**Derating curve:** Potentiometers could dissipated from 100% of nominal power at ambient temperature  $\leq +40^{\circ}\text{C}$  up to 25% nominal power at ambient temperature  $+70^{\circ}\text{C}$ .

**Marking**

Marking on metal case: producer "TELPOD"; rated resistance; month and year of production.

**Ordering example:**

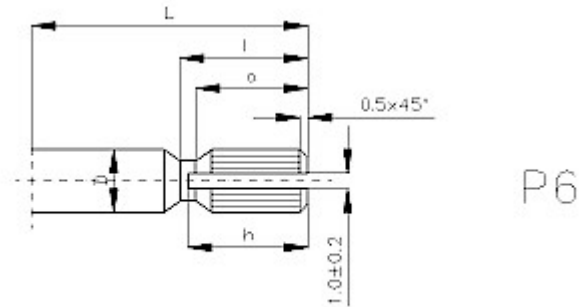
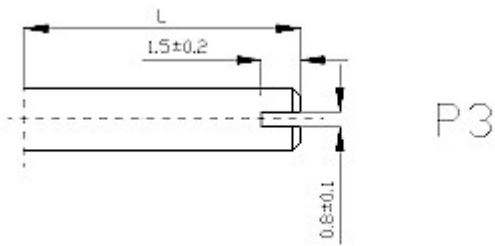
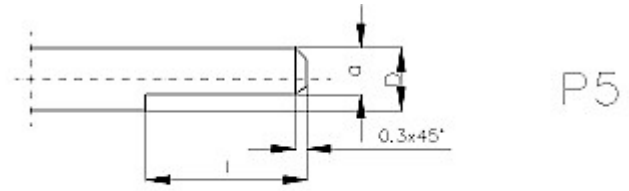
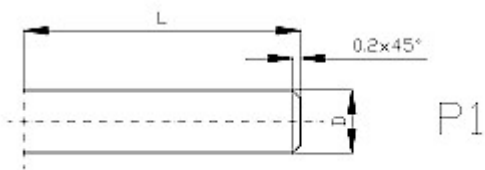
Please order by an example: We need potentiometer 16 mm; with tap; double 47kW; linear A low; diameter of spindle 6 mm, long of spindle 25 mm; end type of spindle P-6; for mounting on printed circuit board (PCB):

**Potentiometer PRPT 162G 47kohms A 25 P6**

**Packing:**

The potentiometers can be supplied in bulk packing in a plastic bags and a carton box.

## Spindles



Indicating Of spindle ends	Dimensions (mm)						
	Diameter D	L/l/a/h					
P-1	4	8/-/-/-	12/-/-/-	16/-/-/-	20/-/-/-	25/-/-/-	32/-/-/-
	6						
P-3	4	8/-/-/-	12/-/-/-	16/-/-/-	20/-/-/-	25/-/-/-	32/-/-/-
	6						
P-5	4	-	-	16/6/3,2/-	20/10/3,2/-	25/12/3,2/-	32/12/3,2/-
	6	16/8/4,5/-	20/8/4,5/-	16/6/4,5/-	20/10/4,5/-	25/12/4,5/-	32/12/4,5/-
P-6	6	-	-	16/-/6/7	20/-/10/11	25/-/12/13	32/-/12/13

### Outline view of potentiometers

