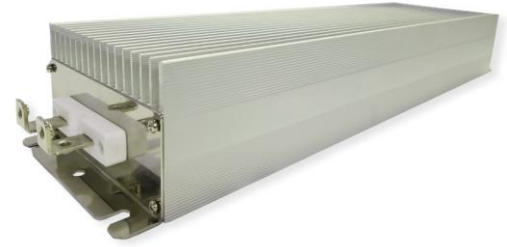


Metal Clad Wire Wound Resistors

The MCS 2000~4000 models are wire wound, metal-clad resistors. These models have an extruded aluminum housing providing strong and rugged protection. The most common applications for these models are : Motor drives, braking and snubber applications, charging for electric vehicles and power sources for industrial equipment.



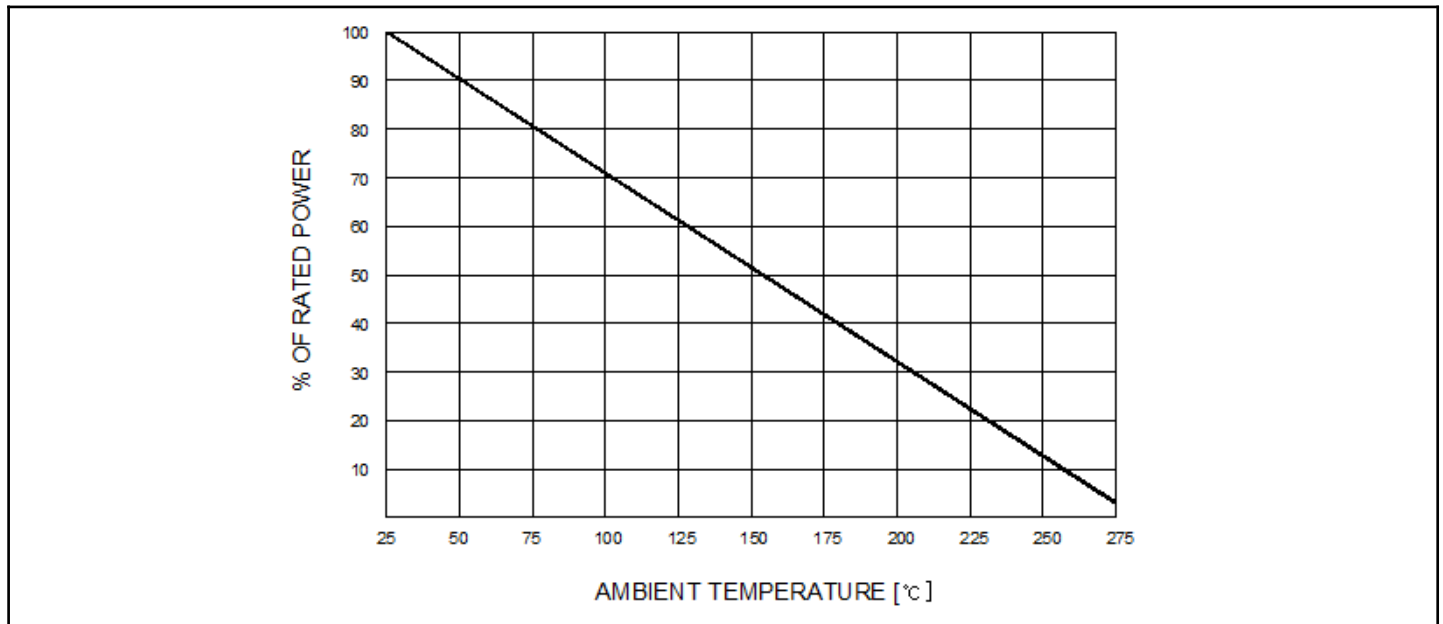
GENERAL SPECIFICATIONS

MODEL	RATED POWER [W] (On Heatsink)	RESISTANCE RANGE [Ω]		TOLERANCE
		INDUCTIVE	NON-INDUCTIVE	
MCS2000	2000	0.1~5.0K	0.1~2.0K	F [±1.0%]
MCS2500	2500	0.1~7.0K	0.1~300	J [±5.0%]
MCS3000	3000	0.1~9.0K	0.1~4.0K	K [±10%]
MCS4000	4000	0.1~9.0K	0.1~4.0K	

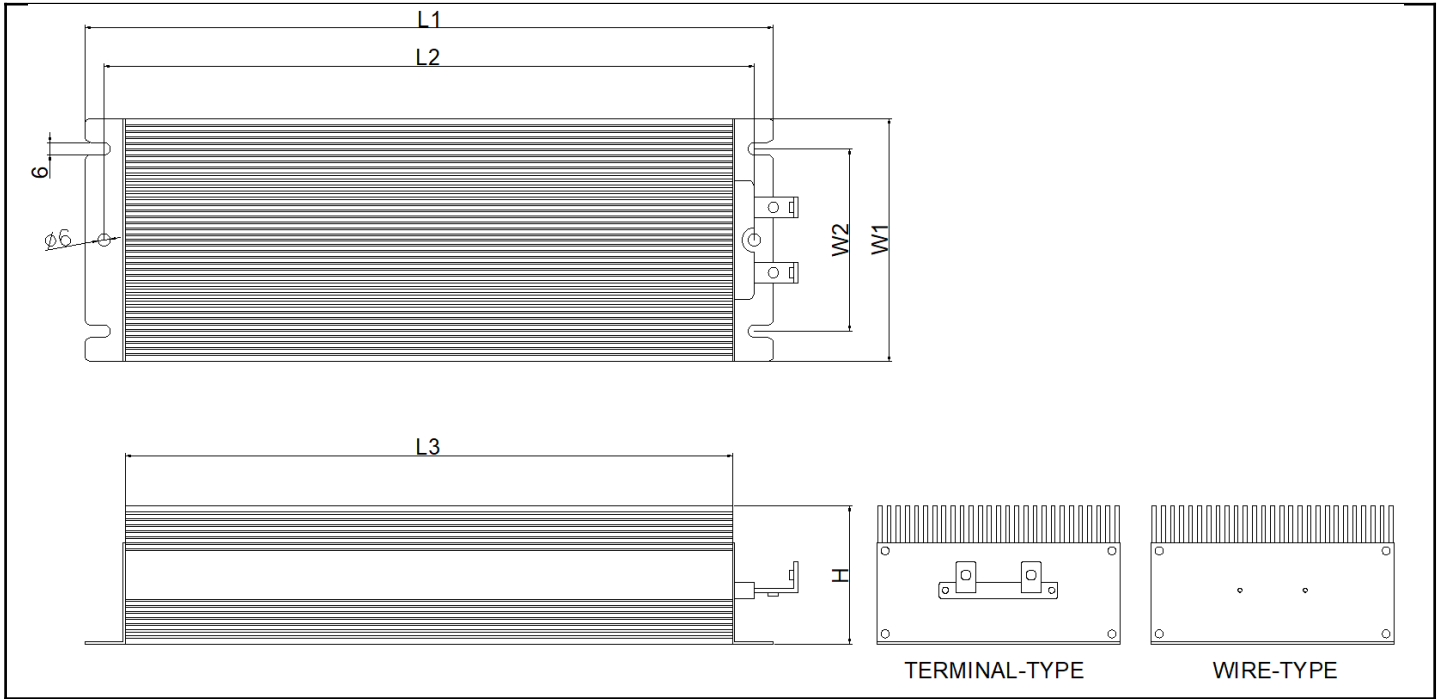
CHARACTERISTICS

TEST	CONDITIONS
DIELECTRIC WITHSTANDING VOLTAGE	AC 2500V for 1minutes (Leakage current : 5mA)
INSULATION RESISTANCE	100MΩ at 500Vdc
HEAT RESISTANCE	±[5%+0.05Ω] 180°C, 2hours

DERATING CURVE



DIMENSIONS[mm]



MODEL	L1±1.5	L2±1.5	L3±1.5	W1±1.0	W2±1.0	H±1.0
MCS2000	340	321	300	120	90	68
MCS2500	400	381	360	120	90	68
MCS3000	460	441	420	120	90	68
MCS4000	580	561	540	120	90	68

ORDERING PROCEDURE EXAMPLE

