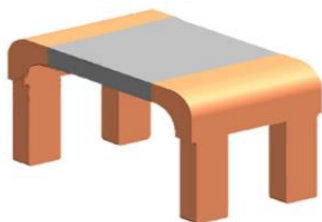


BWH Series (Low Ohmic EB Welded SMD Precision Resistor)



- 5 Watts Permanent Power
- Constant Current up to 100 amps (0.3mΩ)
- High Conductivity Copper Connectors
- Excellent Long Term Stability
- High Application Temperature Range -55°C to +170°C
- Max. Solder Temperature up to 350°C / 30Sec
- Frame Resistant
- Solid Metal Construction
- RoHS and REACH Certified
- AEC-Q200 Qualified
- Applications : Current Sensing/Feedback, Automotive Applications, Power Modules, Frequency Convertors, Inverters, Low Inductance Applications.

■ GENERAL SPECIFICATION

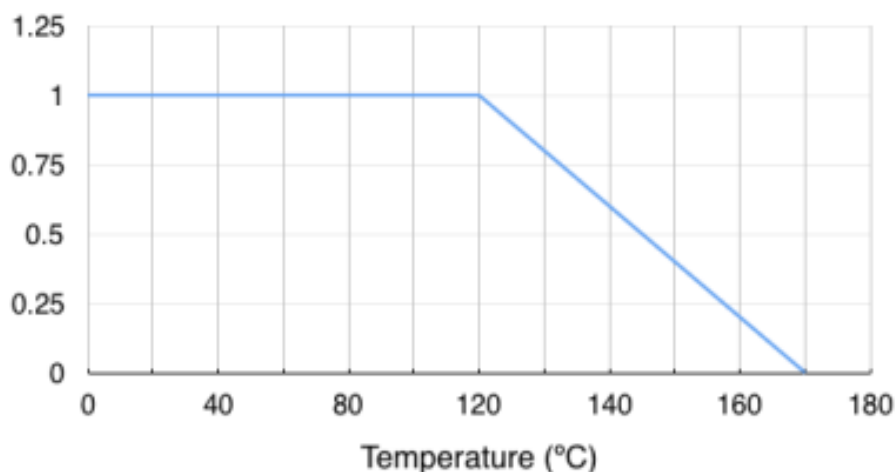
Model	Rated Power [W]	Resistance [mΩ]	T.C.R	Resistance Tolerance [%]
BWH05	5	0.3	± 300 ppm	±1.0%
		0.5		±3.0%
		1.0	± 100 ppm	±5.0%
	4	2.0		

■ CHARACTERISTICS

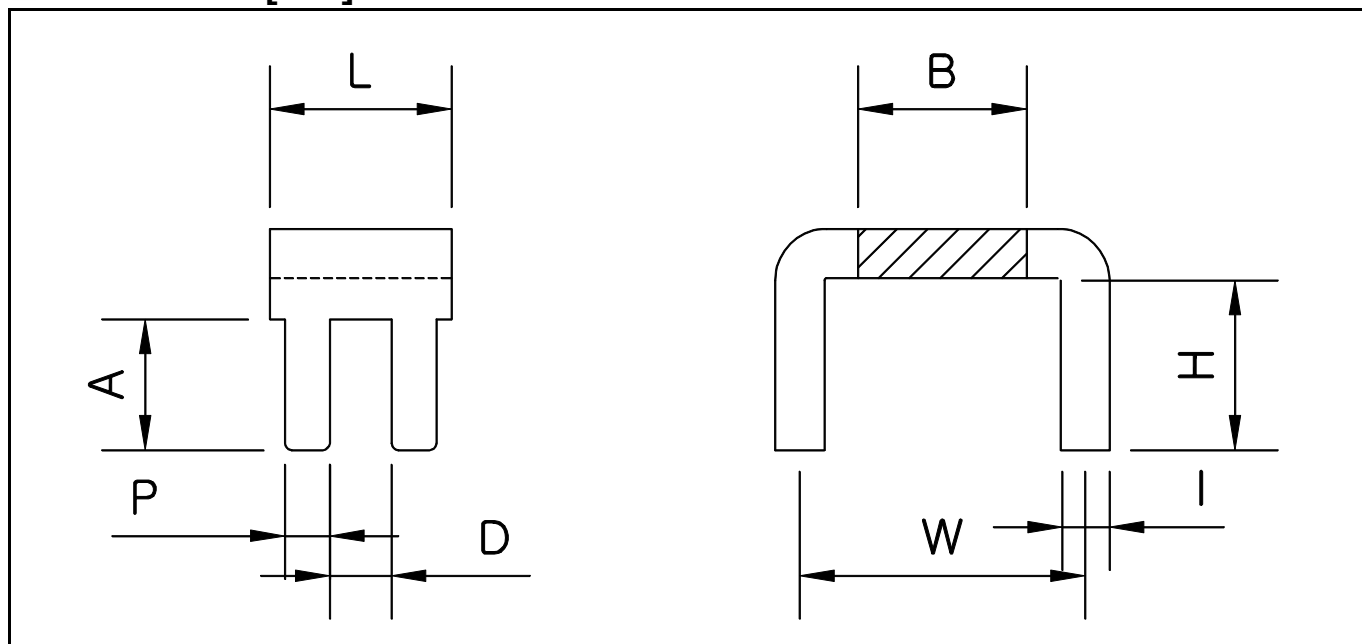
Values in [] mean Change in Ω After Test

Characteristic	Change in Ω After Test	Test Conditions
Thermal Shock	±[0.5%+0.0005]	-55°C to +150°C, 1000cycles, 30min at each extreme
Short Time Overload	±[1.0%+0.0005]	5 X Power rating , 5 Seconds
Low Temp storage	±[0.5%+0.0005]	-65°C for 24 hrs
High Temp exposure	±[1.0%+0.0005]	1000H, at +170°C
Bias humidity	±[0.5%+0.0005]	+85°C, 85%RH, 10% Bias, 1000H
Mechanical	±[0.2%+0.0005]	100g's for 6ms, Half sine
Vibration	±[0.2%+0.0005]	5g for 20minutes, 12 cycles each of 3orientations. 10-2000Hz
Load Life	±[1.0%+0.0005]	125°C at rated power, 1000 hrs.
Resistance to solder heat	±[0.5%+0.0005]	Solder Temp. 260°C, Time 10 seconds

■ DERATING CUREVES



■ DIMENSIONS[mm]



Model	Resistance [mΩ]	Dimensions[mm]							
		B	W	L	A	P	H	D	I±0.1
BWH05	0.3	4.9±0.1	8.3±0.2	5.3±0.1	3.8±0.1	1.3±0.1	5.0±0.2	1.8±0.1	0.85
	0.5								0.86
	1.0								1.36
	2.0								0.68

■ ORDERING PROCEDURE EXAMPLE

